

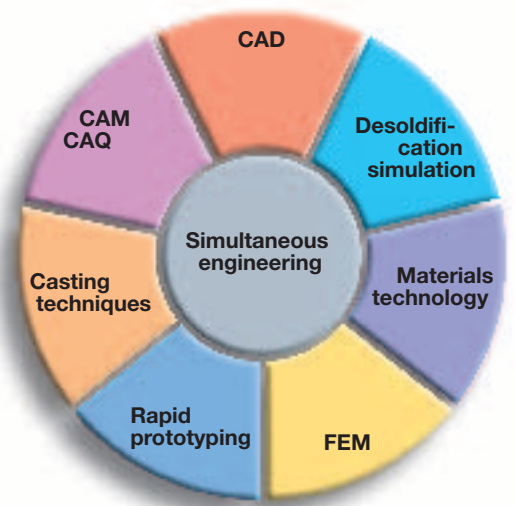


**Your partner for the most
demanding projects –
from development to final product.**

What we offer

At vonRoll casting the three words you hear most often are quality, precision and perfection. You will find their meaning reflected in the quality of the products that come out of our foundries, the precision of the ancillary services we provide and the perfect care we take of our customers. The services on offer range from consultation, via the manufacture and full processing of cast components, to meeting logistical deadlines.

Our engineering centre's expertise is available to our customers for all their metallic material casting requirements. Our engineers and designers use modern 3D CAD and finite element programs to help you find the ideal design solutions for all your operational demands, both mechanical (static or dynamic) and/or thermal. You, as our customer, will be very much involved in this important developmental and creative solution-finding phase in order to produce a prototype that meets the highest standards of quality and reliability as rapidly as possible.



Technical parameters

One of the great strengths of vonRoll casting is our symbiotic approach to a project – we encourage participation by our customers' designers. Jointly we develop highly complex cast components for resolving even the most exceptional requirements. We produce quality components weighing between 1 and 700 kg in the following materials:

Cast iron with lamellar graphite (EN-GJL-150 - 300);
Cast iron with spheroidal graphite (EN-GJS-400 - 700);
SiMo and Ni-Resist-alloys; and Bainite casting (ADI).

We employ machine-moulded green sand moulding techniques.



Your Partner

vonRoll casting is a medium-sized group of companies employing some 450 people. With our superlative track record and many years of experience it will come as no surprise to learn that we are **the market leader in Switzerland** in grey and ductile iron casting.

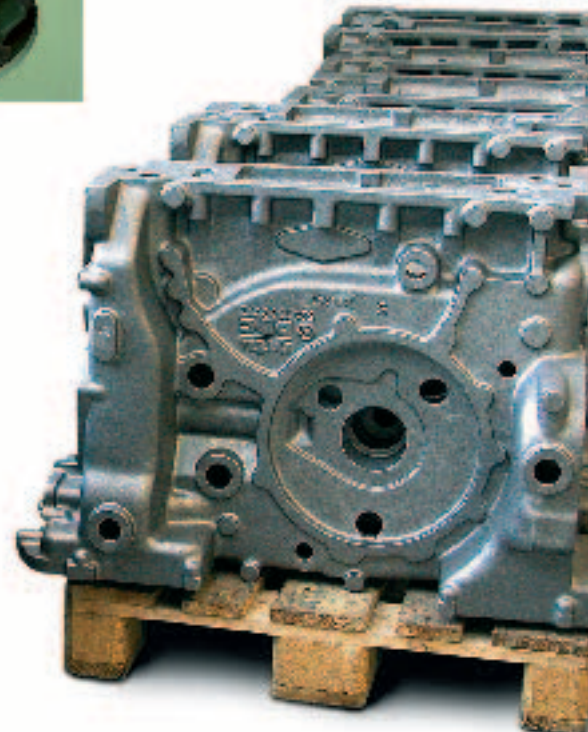
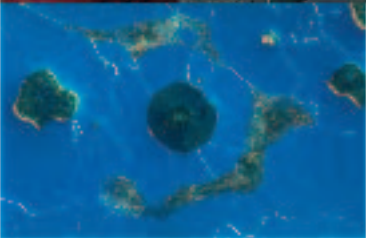
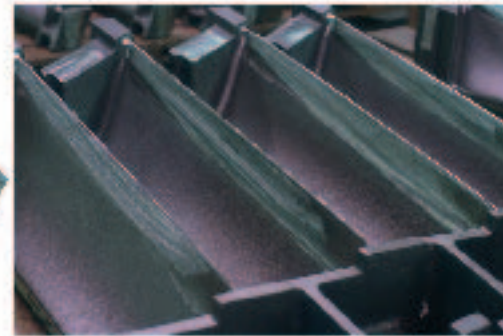
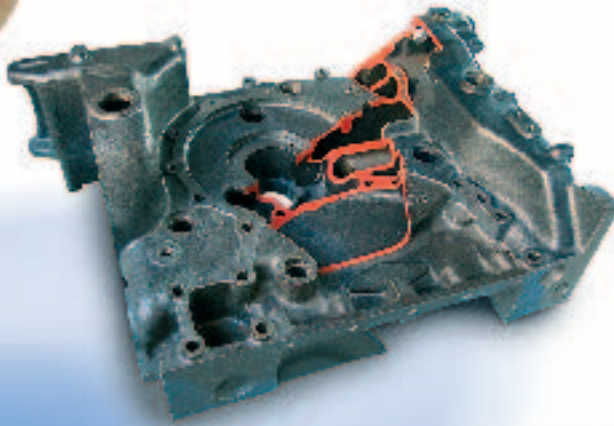
We have two facilities in Switzerland:
vonRoll casting (emmenbrücke) ag
vonRoll casting (rondez) ag

Our machine moulding plant is capable of handling the following flask / moulding box dimensions:

1100 x 925 x 280/280

1400 x 1200 x 350/350

1900 x 1600 x 350/350



Market sectors

Our customers come from all sectors and branches of industry. Most are companies from the non-automotive engine & vehicle, and mechanical engineering sectors. Our solutions make a lasting impression thanks to the creativity of our approach, the accuracy of our work and the precision with which it meets our customers' specifications.

We would be delighted to introduce you to the art and craft of perfect casting. We provide products and services of the highest quality for:

- Textile machines
- Power generation plants
- Vehicles
- General mechanical engineering
- Industrial fittings
- Paper and packaging machines
- Machine-tool equipment
- Lifts
- Injection-moulding machines for plastics

The following selection of manufactured goods speaks for itself

- Gas admission chambers for turbochargers
- Rotor and stator blades for gas and steam turbines
- Water-cooled exhaust pipes and water-bearing casings for large diesel engines
- Internally ventilated disc brakes for railway vehicles
- Pivot components for gangways in articulated buses
- Retarders for hydraulic braking systems
- Gear cases, base plates, side shields etc. for weaving, knitting and spinning machines
- Hydrant cases, shut-off valves, pump and ventilator housings for industrial fittings.



Some customers who have been trusting us with their projects for years:

Textile machines

Lindauer DORNIER GmbH
Maschinenfabrik Rieter AG
Sultex AG
Mayer & Cie. GmbH

Power generation equipment

ABB Turbo Systems AG
Alstom Power Generation AG
GE Jenbacher AG
MTU Friedrichshafen GmbH
MAN Diesel SE

Vehicles

Stadler Rail AG
Alstom Schienenfahrzeuge AG
Daimler AG
MAN Nutzfahrzeuge AG
ZF Friedrichshafen AG
SCANIA CV AG
Knorr Bremse GmbH

Industrial fittings

vonRoll hydro (suisse) sa
Biral AG

General mechanical engineering

AUMA Riester GmbH
Hübner GmbH
Hägglunds Drives AB

Paper and packaging machines

Heidelberger AG
Bobst SA
Müller Martini GmbH

Machine-tool equipment

Trumpf Moschimann AG
Tornos SA
Hilti AG

Lifts

Schindler Aufzüge AG
Doppelmayr GmbH

Visit us at
www.vonroll-casting.ch

or contact us at

vonRoll casting (emmenbrücke) ag
rüeggisingerstrasse 2
ch-6020 emmenbrücke
info@vonroll-casting.ch
tel +41 41 269 34 19
fax +41 41 269 31 39

vonRoll casting (rondez) sa
rondez 17
ch-2800 delémont
info-rondez@vonroll-casting.ch
tel +41 32 421 78 10
fax +41 32 421 77 75

Our spheres of activity



Certifications

- ISO 9001
- VDA 6.1
- ISO 14001
- TÜV DGR 97/23/EG
- TÜV AD-2000
- Deutsche Bahn AG
- Germanischer Lloyd

When may we have the pleasure of welcoming you to one of our foundries?
We look forward to doing business with you. vonRoll casting – engineered casting solutions!

vonRollcasting

vonRoll casting (emmenbrücke) ag
rüeggisingerstrasse 2
ch-6020 emmenbrücke
tel. +41 41 269 34 19
fax +41 41 269 31 39
www.vonroll-casting.ch